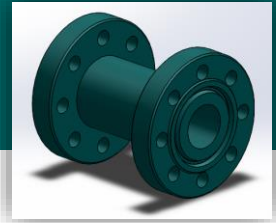




MANUSIN, S.A. DE C.V.



SPACER SPOOL

API 6A Spacer Spools are manufactured with a variety of end and outlet configurations based on customer needs.

FEATURES

- Flanged, studded, and hubbed ends available, in any combination
- Manufactured for any combination of size and pressure ratings
- Spacer Spools designed to minimize length while allowing sufficient clearance for wrenches or clamps, unless otherwise specified by the customer
- The standard design for Spacer Spools does not include outlets, although outlets can be added as specified
- Available for general service and sour service in compliance with any temperature rating and material requirements specified in API specification 6A
- Tap-end studs and nuts are normally provided with studded end connections