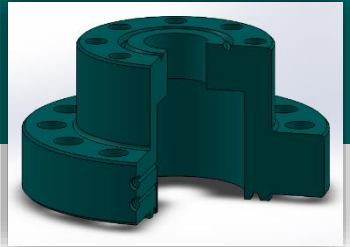




# MANUSIN, S.A. DE C.V.

## A5EN TUBING HEAD ADAPTER



We offer a wide range of A5P Tubing Head Adapter for various applications.

### Features

- 7-1/16"-5KPSI and 3-1/8"-5KPSI studed flange, UDD, PSL-2, PR1
- Top and bottom connections are available in various sizes.
- Bottom connections are flanged with an ID of 5-1/2" typically. The top connection is studed.
- Available with DHCL port upon request.
- Manufactured according to API-6A, PSL-1, DD, L-U, PR-1 (5,000psi) and API-6A, PSL-2, DD, L-U, PR-1 (10,000 psi).